

# School Furniture Catalogue

2023

Creating student-centred spaces  
that meet the needs of every learner



[www.cdispaces.ca](http://www.cdispaces.ca)



CDI SPACES

# Contents

## Our Vision

Creating Spaces. Transforming Lives. .... 4

Message from the CDI Spaces President ..... 5

## Our Services

Experience, Expertise, Execution ..... 6

## Student-Centred Schools ..... 8

Modern Learning Spaces ..... 9

## CLASSROOM FURNITURE ..... 10

### Chairs ..... 12

Stacking Chairs ..... 13

Cantilever Chairs ..... 14

Choose To Move ..... 16

Rocking Chairs ..... 17

Floor Rockers ..... 18

Task Chairs ..... 20

120 Series Stools ..... 21

Lab Stools ..... 22

Civitas Stools ..... 23

Movement ..... 24

### Desks and Activity Tables ..... 26

Student Desks ..... 27

Stand Up Desks ..... 32

Classroom Benefits of Standing Desks ..... 33

Activity Tables ..... 34

Mobile Bench Tables ..... 38

Fliptop Technology Tables ..... 39

Fliptop Tables ..... 40

Early Learning Products ..... 42

## Teacher Furniture ..... 44

Teacher Desks ..... 45

Teacher Chairs ..... 47

## ADMIN FURNITURE ..... 48

Office Layouts ..... 50

Reception Layouts ..... 52

Conference Layouts ..... 54

Staff Room Layouts ..... 56

Side Chairs ..... 58

Task Chairs ..... 59

## COMMON SPACES ..... 60

Learning Commons ..... 62

Flex Spaces ..... 64

Soft Seating ..... 66

## SPECIALTY ROOMS ..... 70

Science Room ..... 72

Sensory Rooms ..... 73

Makerspace Room ..... 74

Music Room ..... 76


Folding Chairs ..... 77

Folding Tables ..... 78

Safety in Schools ..... 79

# Our Vision

Creating Spaces.  
Transforming Lives.



CDI is the leading supplier of tailor-fit furniture solutions for learning environments. For over 30 years, schools have trusted us to help them innovate and grow by creating high-performing and engaging learning spaces that empower students to learn and school staff to excel in a place they love to be. We leverage our deep industry knowledge to guide customers through the complexities of creating, sourcing, and delivering dynamic and welcoming spaces with comfortable furniture that is built to last. Our open and collaborative approach ensures we stay one step ahead of our customers' needs, generating innovative and functional spaces that transform lives.

# Message from the CDI Spaces President

Helping schools to create the perfect educational environment is our passion. At CDI, we're more than a furniture solutions company — we are committed to helping administrators and teachers build warm, welcoming, and modern learning spaces that give students the freedom and flexibility they need to reach their full potential. We understand that behaviours are influenced by surroundings, which is why our dedicated teams of experts will work with you to create a tailor-fit and fully customized student-centred space that enables effective learning and supports teachers to do what they do best.

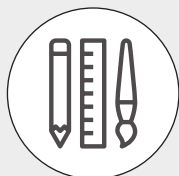
The pages of our 2023 catalogue are filled with safe, modern furniture options that help lay the foundation of your school's educational experience. There's something for every learning style and need, from Kindergarten to Grade 12, and for every person within the school environment, from students to teachers to support staff and administrators. As you browse this catalogue, you can rest assured that our experienced team of experts is just a call or email away, ready to guide you through the process, understanding and anticipating your needs and ensuring your furniture is delivered and assembled successfully. Together, we'll create spaces that inspire.

We can't wait to hear from you.

**Kelvin Devenish**  
CDI Spaces President

# Our Services

CDI delivers a world-class experience that inspires people to work and learn. With CDI you can expect fast and proactive communication and our 'make it right' guarantee, so you can buy with confidence.



Design  
Specifications



Space  
Planning



Student-Centred  
Classroom



Project  
Management



Furniture  
Warehouse



Furniture  
Delivery



Furniture  
Installation  
and Repair

**The CDI team is united by a single purpose: to create solutions through positive interactions.** When you work with us, we are there from start to finish, anticipating your needs and delivering a finished product that exceeds your expectations. Our team of specialized education consultants offers a unified solution that takes you from design to installation with one point of contact for all your questions and project management needs.



SCAN ME

## Get a Quote

**Browse this catalogue.**

- Using your smartphone, scan the code and follow the link.
- Tell us what you're interested in.
- Submit your request online with the click of a button.



## EXPERIENCE

Our team is committed to creating an extraordinary experience for you every step of the way. Our consultants will guide you through the process, taking the time to understand your needs and maintaining proactive communication to ensure your satisfaction.

## EXPERTISE

Our team of experts has over 30 years of experience in creating engaging and welcoming learning spaces that enable students to reach their full potential.

## EXECUTION

We deliver tailor-fit furniture solutions with skilled project execution to create customized spaces that exceed our customers' highest standards.

"Getting our furniture to us on time was nothing short of a miracle given how much time the CDI team was given to work with. I was impressed from start to finish with every step of the process. Thank you!"

**Ecole Broxton**  
Park School



# Student-Centred Schools

## Encouraging movement for healthy habits

People are programmed to move. A young developing brain needs various types of motion to develop important foundational skills. A student-centred classroom allows for healthy movement, providing safe and accessible motion opportunities that help everyone feel organized, alert, fit, and ready to learn. Children who have access to healthy movement in the classroom are more likely to stay engaged and have better attention and behaviours.

## Flexible and balanced spaces

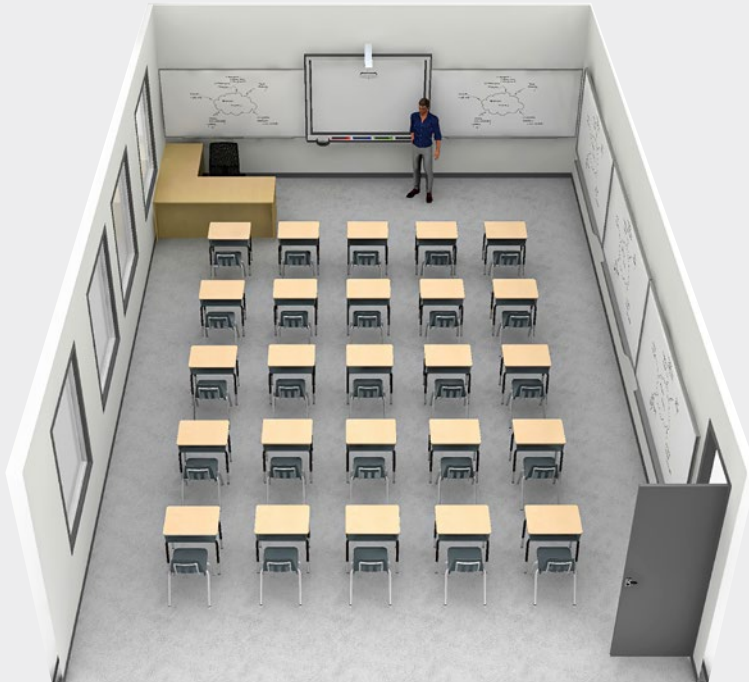
Today's students are digital learners, constantly moving between different applications. Students need spaces for learning that allow them to easily transition between sharing their thoughts, independent study and the opportunity to collaborate with others.

## Dynamic spaces for growth-minded teachers

Teachers are an active part of the learning process, moving through the classroom to facilitate, guide, and encourage students in their pursuit of self-discovery and knowledge. Students thrive in dynamic, personalized learning environments that are designed for technology and activity integrations.

# Modern Learning Spaces

## Traditional Classrooms vs Student-Centred Classrooms



### Traditional

- One size fits all. Students do not have control over their learning style.
- Poorly prepared for collaboration and group assignments.
- Rows of stationary individual desks are difficult to move and discourage collaboration and movement.



### Student-centred

- Allows students to choose the learning approach that suits them.
- Emphasizes collaboration, communication, movement, and creativity.
- Encourages different teaching methods and frequent interactions between students and teachers.



# Classroom

The heart of every school sits in its classroom. It's where students spend the majority of their time, learning, interacting and collaborating. It's where teachers deliver their daily lessons, imparting knowledge and encouraging growth.

---

**"I really appreciate the customer service and excellent products CDI/Spaces Inc. provides. I have been dealing with them since 2009 when I opened a high school in Edmonton."**

# Furniture



Our classroom furniture helps set both students and teachers up for success, creating practical, dynamic and welcoming spaces that encourage and engage. From chairs and stools to desks and tables, and everything in between, our customizable furniture options give you everything you need to curate the perfect learning space.

# Chairs

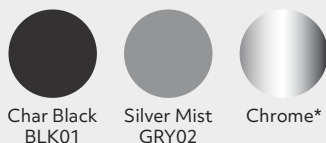
## CHAIR BUYING GUIDELINES

### Plastic Chair Colour Options



### Chair Frame Colour Options

\*Chrome is standard unless specified



### HOW TO SELECT THE RIGHT SIZE CHAIR FOR YOUR CLASSROOM

1

#### Measure your existing chairs

Place your existing school chair on a flat surface. Find the tallest point on the seat (not the backrest) and measure from the floor to the highest point.

2

#### When in doubt, choose larger chairs

You can always fit a student into a larger chair, but you should never seat a student in a chair too small for them. School chairs that are too small can lead to antsy, fidgeting, uncomfortable students who are more likely to be disruptive. A larger chair will be more comfortable and fit the student better as they continue to grow.



### CHAIR BUYING GUIDELINES

KINDERGARTEN .....	12"/14" CHAIRS
GRADE ONE .....	14"/16" CHAIRS
GRADES TWO TO THREE .....	16"/18" CHAIRS
GRADES FOUR AND UP .....	18" CHAIRS

When space is at a premium, our stackable chairs can be quickly stored away to make room for other classroom activities.



### Analogy Series Chair

Analogy's striking upright design features ergonomic support and durability paired with exceptional value.

12" Model AN12 / 14" Model AN14;  
16" Model AN16 / 18" Model AN18



### 9000 Series Chair

The instantly recognizable 9000 Series chair is constructed from highly durable, long-lasting injection-molded Polyethylene.

10" Model 9010 / 12" Model 9012;  
14" Model 9014 / 16" Model 9016;  
18" Model 9018



### Metaphor Series Chair

Designed as a contemporary sequel to the iconic 9000 Series, Metaphor is the ultimate in stackable, storable seating.

12" Model N912 / 14" Model N914  
16" Model N916 / 18" Model N918



### N2 Series Chair

N2 represents a new generation of classroom seating, featuring affordability, comfort, and durability.

12" Model N212  
14" Model N214  
16" Model N216  
18" Model N218



### Zuma Series Chair

ZUMA bridges the gap with seating that offers ergonomic support, playful style, and durable construction – all at an affordable price.

13" Model ZU413  
15" Model ZU415  
18" Model ZU418



### Ratio Series Chair

Ratio offers a sleek and modern design that provides superior comfort with a wide backrest and contoured seat.

14" Model EN-RTO-14  
16" Model EN-RTO-16  
18" Model EN-RTO-18

# Cantilever Chairs

The intuitive flex of the cantilever chair provides surprising comfort - lean forward for typing or note taking and the frame firms up; lean back, and it relaxes.



## Zuma Series Stackable

Get the ergonomic support, playful style, and durable construction of the Zuma – with the added practicality its stacking feature offers.

13" Model ZSTCANT13FG;  
15" Model ZSTCANT15FG;  
18" Model ZSTCANT18FG



## Zuma Series Non-Stacking

ZUMA bridges the gap with seating that offers ergonomic support, playful style, and durable construction – all at an affordable price.

13" Model ZCANT13FG;  
15" Model ZCANT15FG'  
18" Model ZCANT18FG



## Analogy Series Non-Stacking

Analogy's striking upright design features ergonomic support and durability paired with exceptional value.

14" Model ANCANT14;  
16" Model ANCANT16;  
18" Model ANCANT18



## Pantoswing-Lupo

The extra sturdy forward-flexing PantoSwing-LuPo offers superior comfort and ergonomic support.

Model 31400

SEAT HEIGHT:

12¼" (No. 2), 13¾" (No. 3), 15" (No. 4),  
17" (No. 5), 18½" (No. 6), 20½" (No. 7)

## Jumper Air Active Stackable

Jumper Air Active's playful and modern design provides sturdy support, essential comfort and is stackable for added practicality.

SEAT HEIGHT:

12¼" (No. 2), 13¾" (No. 3), 15" (No. 4),  
17" (No. 5), 18½" (No. 6), 20½" (No. 7)





# Choose To Move

Designed with the understanding that kids sometimes need the freedom to move, the C2M (Choose to Move) 4-Leg Chair offers the ultimate choice in active, flexible seating. With the mode selector, you can choose between flex or fixed mode. In motion or not - it's your choice.



## Analogy Choose To Move Student Chair

15" Model ANC2M15  
18" Model ANC2M18



## Analogy Room To Move Mobile Task Chair

18" Model ANR2MTASK18



## Zuma Choose To Move Student Chair

15" Model ZC2M15  
18" Model ZC2M18



## Zuma Room To Move Mobile Task Chair

18" Model ZR2MTASK18



## Pantomove-Lupo Swivel Student Chair

18½" Model 31501  
13¼" - 16¾" Model 31505  
16½" - 21½" Model 31506



## Jumper Air Move Swivel Student Chair

18½" Model 33501  
13¾" - 17½" Model 33502  
16¾" - 21½" Model 33506

Rockers combine gentle movement and flexible support to help children channel excess energy into classroom endeavours.



### Analogy Series Rocking Chair

Analogy's striking upright design features ergonomic support and durability paired with exceptional value.

14" Model ANROCK14FG;  
16" Model ANROCK16FG;  
18" Model ANROCK18FG



### Zuma Series Rocking Chair

Ergonomically designed with gentle, flexible support, ZUMA Rockers encourage healthy movement.

13" Model ZROCK13FG;  
15" Model ZROCK15FG;  
18" Model ZROCK18FG



### Sage Series Rocking Chair

The Sage series offers a larger contoured shell, wider backrest, and elegantly curved, extra heavy-duty legs.

13" Model SGROCK13FG;  
15" Model SGROCK15FG;  
18" Model SGROCK18FG



Sitting low to the ground may be just what is needed to create a comfortable and effective learning environment for some students and tasks. Sturdy and safe Floor Rockers feature subtle back and forth motion, offering an ergonomic alternative for floor seating.



### Zuma Floor Rocker

15" K-Grade 4 Model ZFLROCK15  
18" Grade 5+ Model ZFLROCK18



### Sage Floor Rocker

15" K-Grade 4 Model SGFLROCK15  
18" Grade 5+ Model SGFLROCK18



### Analogy Floor Rocker

15" K-Grade 4 Model ANFLROCK15  
18" Grade 5+ Model ANFLROCK18



Our comfortable and practical task chairs offer a flexible, creative, and durable solution for any learning environment.



## Metaphor Series Mobile Task Chair

Designed as a contemporary sequel to the iconic 9000 Series, Metaphor has an updated three-hole backrest that offers exceptional ventilation. Includes adjustable seat height and casters.

13" - 16" Model N9TASK16  
15" - 19" Model N9TASK18



## N2 Series Mobile Task Chair

Two sets of contoured, flexible ribs allow the upper back to flex more than the lower, for exceptional comfort and support. Includes adjustable seat height and casters.

18" - 22" Model N260GC



## Analogy Series Mobile Task Chair

Analogy's striking upright design features ergonomic support and durability paired with exceptional value. Includes adjustable seat height and casters.

12" - 15" Model ANTASK16  
15" - 22" Model ANTASK18



## Zuma Series Mobile Task Chair

ZUMA bridges the gap with seating that offers ergonomic support, playful style, and durable construction. Includes adjustable seat height and casters.

14" - 17" Model ZTASK15  
16" - 20" Model ZTASK18

Stools for every school environment and student need. Virco 120 Series Stools feature a tubular steel frame and soft plastic seat and are available in three heights.



### Zuma Lab Stool

25" - 33" Model ZU2533LSSG



### Adjustable Stools

19" - 27" Model 1201927SG  
25" - 33" Model 1202533SG



### Ultima Stack Stool

18" Model number SS18  
24" Model number SS24  
30" Model number SS30



### Stool

18" Model 12018  
24" Model 12024  
30" Model 12030



Our range of durable, adjustable stools are a welcome addition to any classroom, science, or technology lab and feature integral chrome foot rings for extra comfort.



### N2 Mobile Lab Stool

Includes adjustable seat height, footring, and casters.

22" - 28" N260GCLS



### Analogy Lab Stool

Includes adjustable seat height, footring, and casters.

19" - 26" Model ANLAB



### Metaphor Lab Stool

Includes adjustable seat height, footring, and casters.

20" - 28" Model N9LAB



### Zuma Lab Stool

Includes adjustable seat height, footring, and casters.

19" - 27" Model ZLAB



Flexible ergonomic support with unsurpassed style - the Civitas line of stools is the next generation of classroom seating.



### Analogy Civitas Stool

With an ergonomically contoured shell, the Civitas with Analogy Series enlarged seat offers a high-value classroom solution.

25" *Model CA25EL*  
 30" *Model CA30EL*



### Zuma Civitas Stool

By combining proprietary chemistry with innovative mold design and process control, Civitas with ZUMA bridges the gap with seating that offers ergonomic support, playful style, and durable construction without breaking your budget.

25" *Model CZ25*  
 30" *Model CZ30*

A student-centred classroom is designed to allow for healthy sitting habits and mobility. Quickly change the environment of the classroom with these fun, easy-to-move chairs and stools.

## Self-Regulation Classroom Cruiser

The Self-Regulation Classroom Cruiser is designed to provide opportunities for students, grades 3-6, to self-regulate through movement without having to leave or disrupt the class. It is ideal for inclusive environments and helps kinesthetic learners and any student who needs to get the wiggles out so they can refocus and engage in learning. In just a ten-minute ride, students can become more engaged and ready to learn.

Self-Regulation Classroom Cruiser Without Desktop



Self-Regulation Classroom Cruiser With Desktop



- Designed for fit, riding comfort, and safety for students grades 3-6.
- Durable build and exceeds commercial standards (with over 7 million testing cycles)

- Quiet drivetrain to minimize distraction
- Fully adjustable for the safest ergonomics
- Low maintenance



## Stool

Keep students active and engaged with a seat that features a self-balancing base and an octagon shaped seat that can easily hang from any classroom desk.

- 12"H Model HIH-12
- 15"H Model HIH-15
- 18"H Model HIH-18
- 21"H Model HIH-21

## Classroom Furniture



### Bike Desk 3.0

Lightweight and foldable, the popular Bike Desk 3.0 offers an adjustable desk platform and built-in tablet holder, bringing learning and healthy mobility together in the classroom. The desk, seat back and extension are adjustable to accommodate different students, and an easy access storage drawer is practical and organized.



### Hokki Stool

A fun and modern movement option, the Hokki wobble stool features curved surfaces that stimulate the entire musculo-skeletal system. Easy to carry with a scalloped edge and made from durable and scratch-resistant polypropylene, this stool is a wonderful addition to a dynamic classroom. Easy stacking helps save space when you need it.

Model 03825	12¼" (No. 2), 15" (No. 4)
	18½" (No. 6), 20½" (No. 7)
Model 03813	15" - 19¾"
Model 03814	19¾" - 26¾"



### Analogy Choose To Move Student Chair

15" Model ANC2M15  
18" Model ANC2M18



### Analogy Series Rocking Chair

Analogy's striking upright design features ergonomic support and durability paired with exceptional value.

14" Model ANROCK14FG  
16" Model ANROCK16FG  
18" Model ANROCK18FG



### Analogy Floor Rocker

15" K-Grade 4	Model ANFLROCK15
18" Grade 5+	Model ANFLROCK18

# Desks and Activity Tables



From seated single student desks to standing desks, and practical, lightweight tables, our options offer educators the right solution for every lesson and activity. Our dynamic shapes, a classroom is equipped for every scenario, from independent study to collaborative teamwork.

## Laminate Colours



Fusion  
Maple  
MPL385



Medium  
Oak  
OAK084



Looks  
Liatre  
WHT066



Asian  
Sand  
MPL008



Grey  
Nebula  
GRY091



Dry Creek  
Plum  
OAK072

## Martest Colours



Fusion  
Maple  
MPL385



Medium  
Oak  
OAK084



Looks  
Liatre  
WHT066



Asian  
Sand  
MPL008



Grey  
Nebula  
GRY091



Dry Creek  
Plum  
OAK072



Sandstone  
BRN96

## Frame Colours



CharBlack  
BLK01



SilverMist  
GRY02

Our single-student desks are great for classrooms where group activities take place regularly; they can also be easily arranged in rows when required for independent study or testing.



### 785 Series Laminate Desk

Virco's hard-working adjustable-height desk features a durable laminate top and a tubular steel frame. Recommended for grades 7 and up. Legs adjust from 23" to a top height of 31" in one-inch increments.

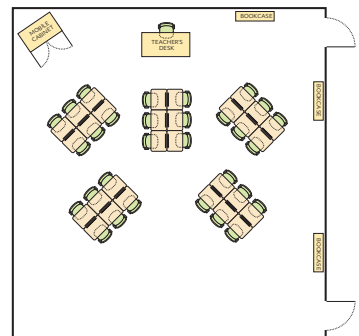
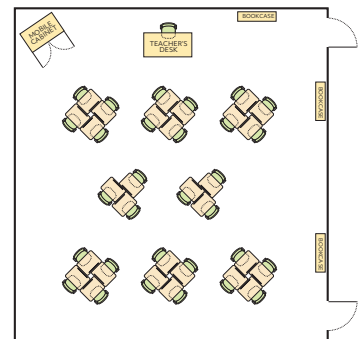
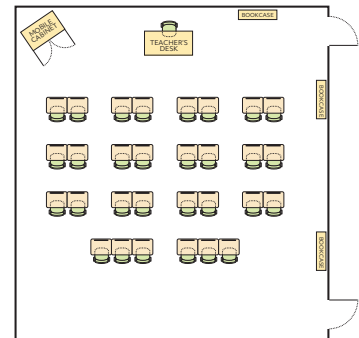
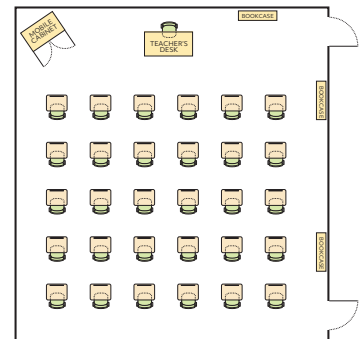
18" x 24" LEG BRACE 785LBNBB  
18" x 24" NO LEG BRACE 785NBB



### 785 Series With Book Box

This adjustable-height, open-front student desk features a tubular steel frame and built-in metal book box for easy storage. Legs adjust from 23" to a top height of 31" in one-inch increments. Recommended for grades 1 - 6.

18" x 24" LAMINATE 785  
18" x 24" MARTEST 785M  
18" x 24" LAMINATE METAL  
BOOK BOX 785MBB  
18" x 24" MARTEST METAL  
BOOK BOX 785MBBM



### Zuma Rectangle Desk

The Zuma student desk is an adjustable-height desk with a colourfast 20" x 26-1/8" rectangular Martest hard plastic top that resists staining and chipping. The height can be adjusted from 22" to 34" in one-inch increments.

20" x 26" ZADJ2026M  
20" x 26" BOOK BOX ZADJ2026BOXM  
20" x 26" TOTE TRAY ZADJ2026TTM  
20" x 26" x 30"H Z202630M





## Rectangle Adjustable Desk

The 20"x28" adjustable desk offers a simple yet modern classroom desk solution with a 24.5" - 29.5" top-height adjustment range.

Model EN-2028-NBB-DSK



## Adjustable Desk With Storage

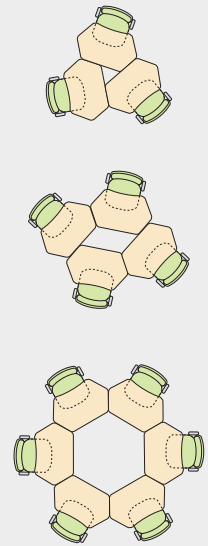
This 18"x24" adjustable desk offers bookbox storage and bookbag hooks when classroom space is at a premium. The desktop design is simple yet intuitive, with a 24.5" - 29.5" top-height adjustment range.

Model EN-1824-BB-DSK

### 785 Collaborative Desk

This adjustable-height, open-front student desk features a tubular steel frame and built-in plastic book box along with a collaborative top and durable laminate surface. Legs adjust from 23" to a top height of 31" in one-inch increments.

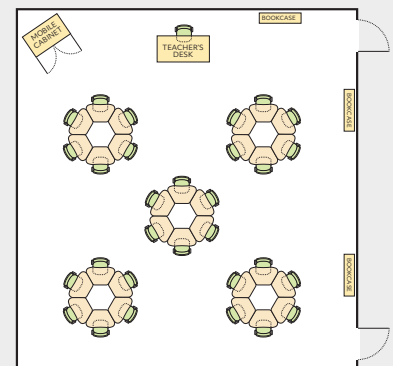
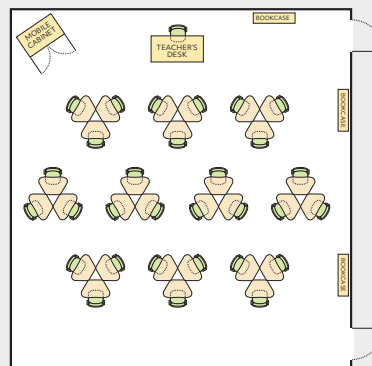
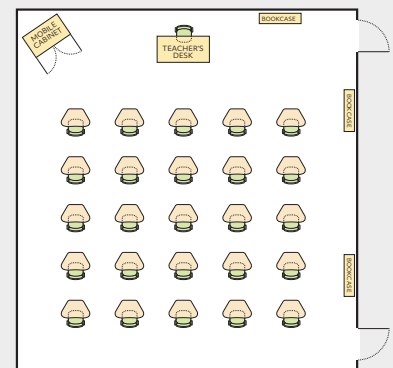
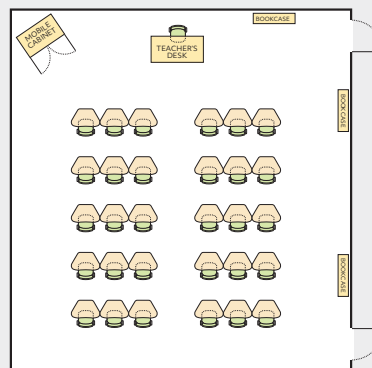
32" x 19" LAMINATE 785CT  
32" x 19" MARTEST 785CTM

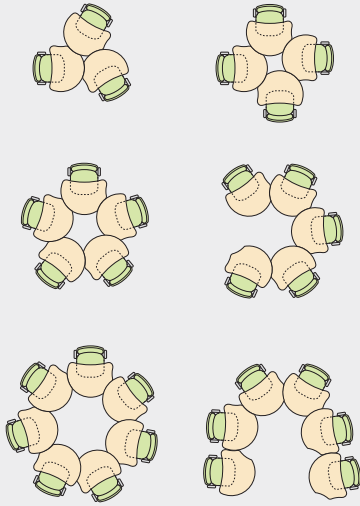


### Zuma Hexagon Desk

This adjustable-height desk with a trapezoid top enables six of these models to be arranged in a six-foot diameter group learning configuration. The desk's colourfast Martest hard plastic top resists staining and chipping. Legs adjust from 22" to a top height of 34" in one-inch increments.

21" x 33" ZHEXM  
21" x 33" BOOKBOX ZHEXBOXM  
21" x 33" TOTE TRAY ZHEXMTT





## Molecule Desk With Book Box

Molecule's unique shaped collaborative top allows for single-student use or grouping of multiple desks in various arrangements.

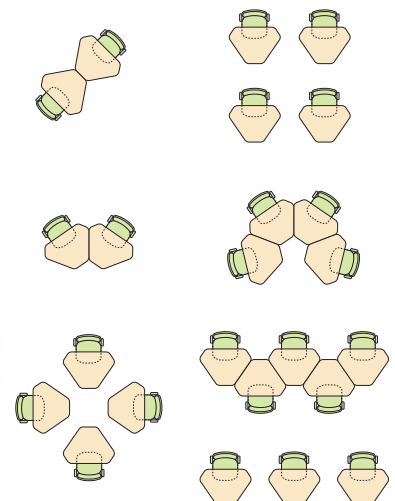
24" x 32"		MC2432
24" x 32"	BOOK BOX	MC2432BB
24" x 32"	TOTE TRAY	MC2432TT



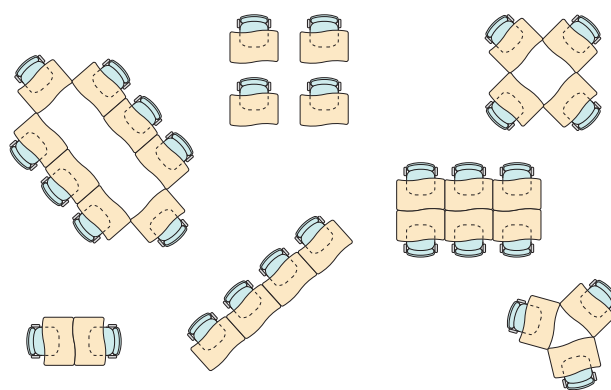
## Triangle Student Desk

The Triangle Student Desk supports flexible learning environments and are quick to adapt from individual use to various group learning styles. Durable laminate top and legs that adjust from 24" to a top height of 32".

29" x 33"		50TRIADJ
29" x 33"	BOOK BOX	50TRIADJBB
29" x 33"	TOTE TRAY	50TRIADJTT



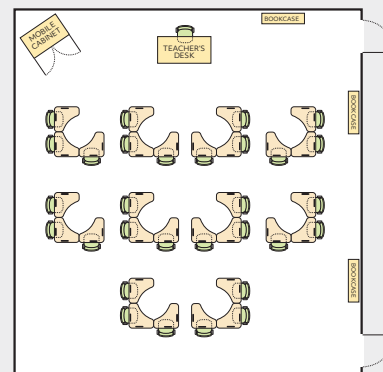
## Classroom Furniture



### Zuma Slide Student Desk

Designs can nest together, then regroup into new patterns that reinforce the concept of creative thinking. Durable laminate top and legs that adjust from 22" to a top height of 34".

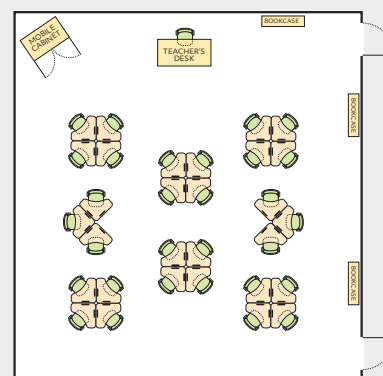
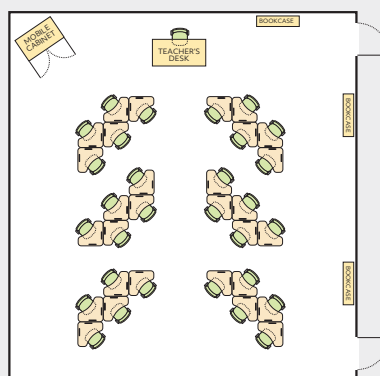
22" x 32"	ZSLADJ
22" x 32" BOOK BOX	ZSLADJBB
22" x 32" TOTE TRAY	ZSLADJTT



### Zuma Boomerang Desk

The ZUMA series offers ergonomic support, playful style, and durable construction - all at an affordable price. 22" - 34" top-height adjustment range.

28" X 28" LAMINATE	ZBOOM
28" X 28" MARTEST	ZBOOMM
28" X 28" LAMINATE BOOK BOX	ZBOOMBB
28" X 28" MARTEST BOOK BOX	ZBOOMBBM
28" X 28" LAMINATE TOTE TRAY	ZBOOMTT
28" X 28" MARTEST TOTE TRAY	ZBOOMTTM



# Stand Up Desks

Standing desks are a simple and modern way to create a movement-rich environment where children are more engaged, perform better academically, and burn more calories.



## Zuma Hexagon Desk

The Zhexsum stand up desk features fully-adjustable 29" - 41" legs and a uniquely shaped work surface that enables 4-desk clusters for collaborative learning activities. Available with a book box.

21" x 33"    MARTEST    ZHEXSUM



## Zuma Boomerang Desk

The stand up ZBOOM desk offers ergonomic support, playful style, and durable construction - all at an affordable price. Adjustable height legs from 31 - 41", and leg brace included.

28" x 28"    LAMINATE    ZBOOMSULB  
28" x 28"    MARTEST    ZBOOMSULBM



## Zuma Stand Up Height Desk

The ZUMA series adjustable stand up height student desks come with FRW™ hard plastic tops and an adjustable height range of 29" - 41" for flexible learning spaces.

20" x 26"    Z2026SUM



## Molecule Stand Up Height Desk

Molecule's unique shaped collaborative top allows for single-student use or grouping of multiple desks in various arrangements. Adjustable height range of 29" - 41".

24" x 32"    MC2432SU

---

## ENHANCED HEALTH

Standing desks can increase calorie burn by 17-35% and decrease BMI percentile by 5%. Achieving and maintaining a healthier weight is linked to increased confidence and self-esteem, which is directly tied to attendance rates.

---

## INCREASED ENGAGEMENT

Standing desks lead to better focus and attention in class. Students have more eye contact with teachers and 7-9 more minutes of engagement per hour – an increase of up to 15%.

---

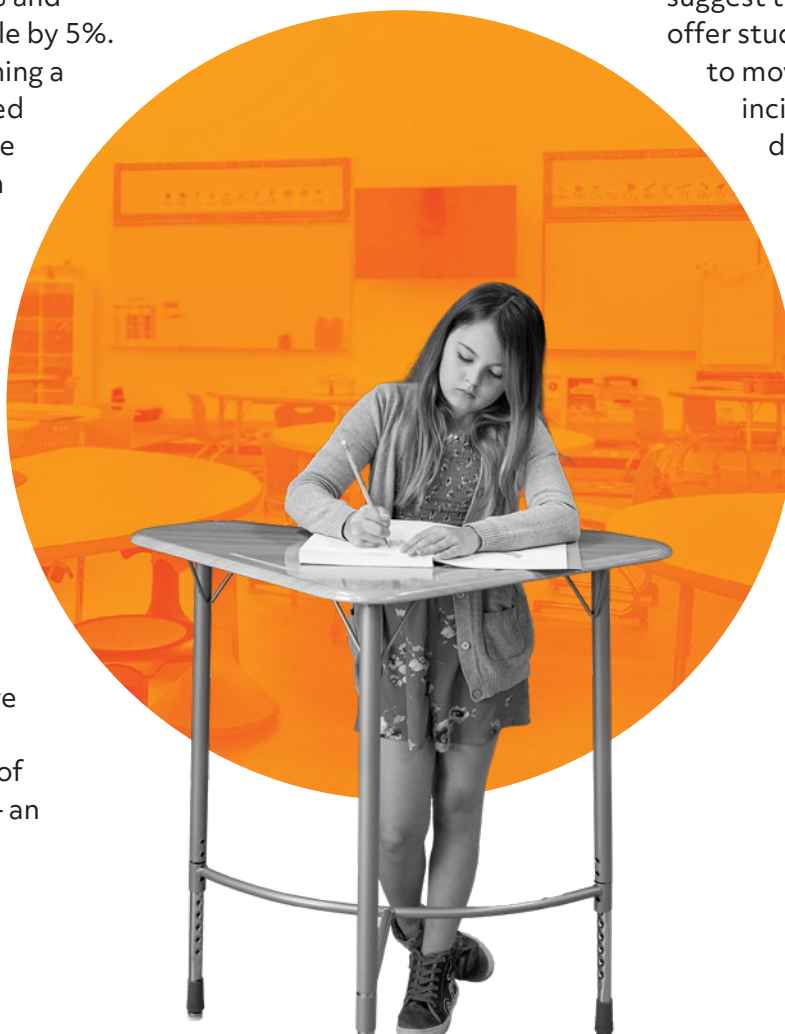
## REDUCED DISRUPTIONS

Both research and teachers suggest that classrooms that offer students more flexibility to move have reduced incidents of behavioral disturbances, fewer distractions, and improved collaboration.

---

## IMPROVED ACADEMICS

Moving more and sitting less in class can lead to 3-5% improvement on test scores.



# Classroom Benefits of Standing Desks

Exercise is proven to improve memory and focus. Students who have the freedom of more movement in the classroom experience a variety of benefits.



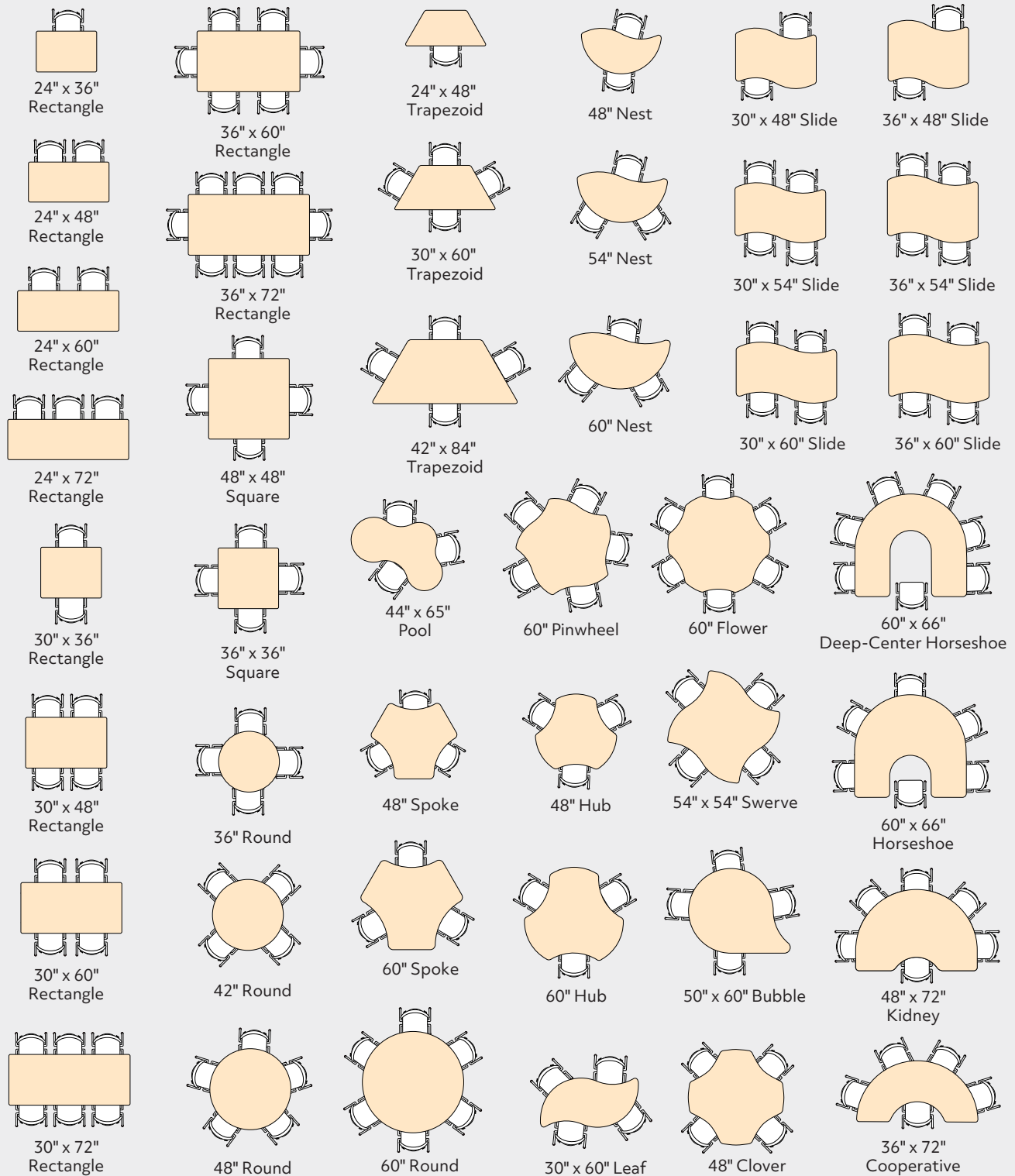
# Activity Tables

Easily configured and able to accommodate students of every age, Virco Activity Tables are ideal for the dynamic atmosphere of the 21st Century classroom. These activity tables support every stage and style of learning - from independent study to collaborative group work and creative hands-on projects. The

nesting shapes can be easily grouped into pods or split apart for different uses, and a selection of height-adjustable legs can handle the smallest preschooler to the tallest student. Virco Activity Tables are the perfect choice for versatile, modern educational environments.

# Tables with a Twist

The tabletop is where collaboration begins. With distinct shapes and a multitude of sizes, Virco tables form a solid foundation for classroom, café, workroom, or seminar activities. Choose from an array of tables that can be organized into groups, split into separate areas, set at different heights, or a combination of all three. Any top can also come as a whiteboard.



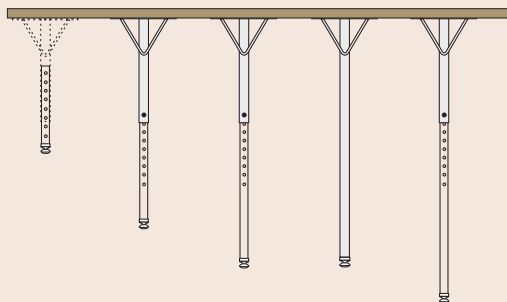
## Legs that stand out - and stand up

Easily coordinate Virco Activity Tables with your classroom aesthetics with thin or thick profile legs. Choose 4000 Series tables for the classic look of a thin profile, or make a bold statement with the 5000 Series featuring a thick profile. We offer a number of models with stand-up height legs and each series can be configured with fixed or adjustable legs to accommodate your ideal set-up. The Virco 4000 Series Adjustable Height Activity Tables can now be converted to a floor table with our Adjustable Floor Table Conversion Kits.



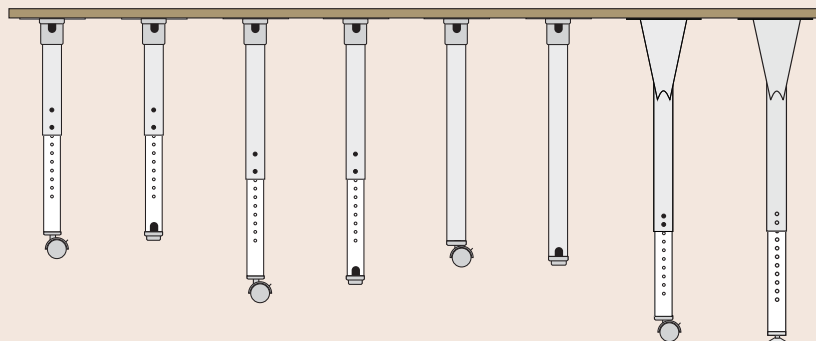
### 4000 SERIES THIN PROFILE LEGS

<b>48FLRLEG</b> 14 1/4" - 22 1/4" Adj-Height Nylon Glides	<b>LO</b> 17" - 25" Adj-Height Nylon Glides	<b>STANDART</b> 22" - 30" Adj-Height Nylon Glides	<b>N(FIXED)</b> 30" Fixed-Height Nylon Glides	<b>W(WHEELCHAIR)</b> 26" - 34" Adj-Height Nylon Glides
--	--	--	--	---



### 5000 SERIES THICK PROFILE LEGS

<b>ADJCLO</b> 21" - 29" Adj-Height Lock Casters	<b>ADJLO</b> 19" - 27" Adj-Height ABS Glides	<b>ADJC</b> 26" - 34" Adj-Height Lock Casters	<b>ADJ</b> 24" - 32" Adj-Height ABS Glides	<b>30C(FIXED)</b> 30" Fixed-Height Lock Casters	<b>30(FIXED)</b> 30" Fixed-Height ABS Glides	<b>ADJCSU</b> 30" - 39" Adj-Height Lock Casters	<b>ADJSU</b> 30" - 39" Adj-Height Nylon Glides
--	---	--	---	--	---	--	---



4000 SERIES 22" - 30" Adjustable Legs			5000 SERIES Thick 24" - 32" Adjustable Legs
SHAPE	SIZE	MODEL	MODEL
Rectangle	24" x 36"	482436	502436ADJ
Rectangle	24" x 48"	482448	502448ADJ
Rectangle	24" x 60"	482460	502460ADJ
Rectangle	24" x 72"	482472	502472ADJ
Rectangle	30" x 36"	483036	503036ADJ
Rectangle	30" x 48"	483048	503048ADJ
Rectangle	30" x 60"	483060	503060ADJ
Rectangle	30" x 72"	483072	503072ADJ
Rectangle	36" x 60"	483660	503660ADJ
Rectangle	36" x 72"	483672	503672ADJ
Square	36" x 36"	483636	503636ADJ
Square	48" x 48"	484848	504848ADJ
Round	36" Round	4836R	5036RADJ
Round	42" Round	4842R	5042RADJ
Round	48" Round	4848R	5048RADJ
Round	60" Round	4860R	5060RADJ
Flower	60" Flower	48FLOW60	50FLOW60ADJ
Deep-Centre Horseshoe	60" x 66"	48HORSE60DC	50HORS60DCADJ
Horseshoe	60" x 66"	48HORSE60	50HORS60ADJ
Kidney	48" x 72"	48KID72	50KID72ADJ
Clover	48"	48CLO48	50CLO48ADJ
Swerve	54" x 54"	48SWV54	50SWV54ADJ
Spoke	48"	48SPK48	50SPK48ADJ
Spoke	60"	48SPK60	50SPK60ADJ
Hub	60"	48HUB60	50HUB60ADJ
Hub	48"	48HUB48	50HUB48ADJ
Trapezoid	24" x 48"	48TRAP48	50TRAP48ADJ
Trapezoid	30" x 60"	48TRAP60	50TRAP60ADJ
Trapezoid	42" x 84"	48TRAP84	50TRAP84ADJ
Leaf	30" x 60"	48LF3060	50LF3060ADJ
Pinwheel	60"	48PIN60	50PIN60ADJ
Nest	60"	48NEST60	50NEST48ADJ
Nest	54"	48NEST54	50NEST54ADJ
Nest	48"	48NEST48	50NEST60ADJ
Slide	30" x 60"	48SL3060	50SL3060ADJ
Slide	30" x 54"	48SL3054	50SL3054ADJ
Slide	30" x 48"	48SL3048	50SL3048ADJ
Slide	36" x 48"	48SL3648	50SL3648ADJ
Slide	36" x 54"	48SL3654	50SL3654ADJ
Slide	36" x 60"	48SL3660	50SL3660ADJ
Bubble	50" x 60"	48BU5060	50BU5060ADJ
Half Moon	36" x 72"	48COOP72	50COOP72ADJ
Pool	44" x 65"	48POOL	50POOLADJ

## Mobile Bench Tables

Classroom Furniture

Convenient mobile tables with built-in seating are a flexible and practical option for any space. Heavy-duty locking wheel assemblies ensure mobility and ease of storage.



### MTS Series Mobile Stool Table

Classic mobile tables with built-in seating are convenient and flexible. Specially designed torsion bars make these tables easy to fold and unfold. Up-lock and down-lock mechanisms combined with heavy-duty wheel assemblies facilitate simple setup and tear-down.



### Mobile Stool Table

These practical and convenient tables are designed with an "EasyLift" Torsion Bar System, so one person can easily lift and fold them for quick storage. Storage latch release handles on both sides unlock, and the self-leveling automatic down lock ensures the table is fully opened. Curved frame design and generous spacing prevents tripping and allows for easy entry, exit, and cleaning.



### 60" Round Mobile Table With Benches

Mobile fixed bench units are the perfect solution when more seating is needed. Built on a solid 14-gauge steel frame with tamper-free hardware, tabletops and benches are protected with a high pressure laminate top and a phenolic backer sheet making them power-washable.



### 6' Convertible Bench Table

Convertible bench units are sturdy and versatile. Built on a solid 14-gauge steel frame, tabletops and benches are protected with a high pressure laminate top and a phenolic backer sheet making them power-washable.

Our Flip-Top Technology tables feature a 6" deep locking flip-top compartment that secures cables, surge protectors, and wires beneath the work surface for a clutter-free learning and work environment.

WALNUT	MODEL
24"W x 30"L x 18"D	FTT2430
24"W x 36"L x 18"D	FTT2436
24"W x 42"L x 18"D	FTT2442
24"W x 48"L x 18"D	FTT2448
24"W x 60"L x 18"D	FTT2460
24"W x 72"L x 18"D	FTT2472
24"W x 84"L x 18"D	FTT2484
30"W x 30"L x 24"D	FTT3030
30"W x 36"L x 24"D	FTT3036
30"W x 42"L x 24"D	FTT3042
30"W x 48"L x 24"D	FTT3048
30"W x 60"L x 24"D	FTT3060
30"W x 72"L x 24"D	FTT3072
30"W x 84"L x 24"D	FTT3084



Available with char black or silver mist table frame and the following laminate table tops.



ASIAN  
SAND



LOOKS  
LIKE TRE



GREY  
NEBULA



DRY CREEK  
PLUM



MEDIUM  
OAK



FUSION  
MAPLE



CARMEL  
SAGAWOOD



WALNUT



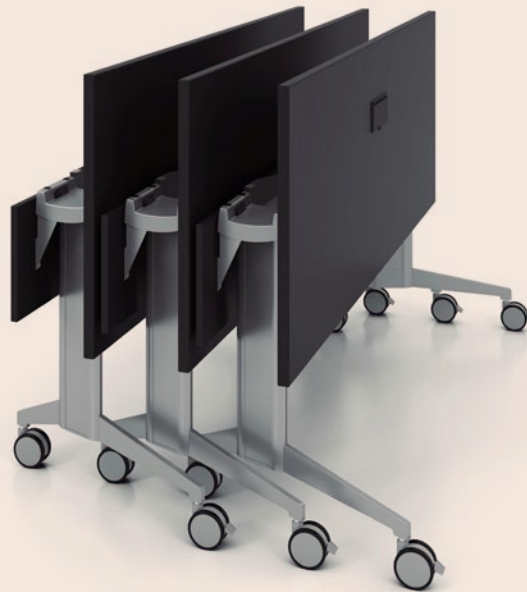
Flip-top tables provide an elegant solution for multi-purpose environments that require flexible layouts, such as training rooms or conference rooms. With a simple adjustment, these nesting tables can be stored in tight closets, making them an ideal addition to the space-conscious office.

### Modulus Flip Table Whiteboard

Modulus flip tables can be used in any combination, which creates endless opportunities for constructive interaction in classrooms, training rooms, and meeting rooms. All flip tables come with durable locking castors to ensure they are easy to reconfigure into new layouts.

### Genius Training Table

For training conferences, meetings, and brainstorming sessions, Genius can be reconfigured on the spot! Thanks to an ingenious interlocking design, these training tables can be stored in a minimum of space



### Uniflip Height Adjustable Fliptop Table

Height adjustment feature now makes flip-top tables accessible to a wider variety of students. Simply set the frame to the proper height you need. Easily raise or lower the table if the facility needs change.

*Frame Heights:*  
20" to 25"  
24" to 33"  
34" to 42"



### Uni Flip Table

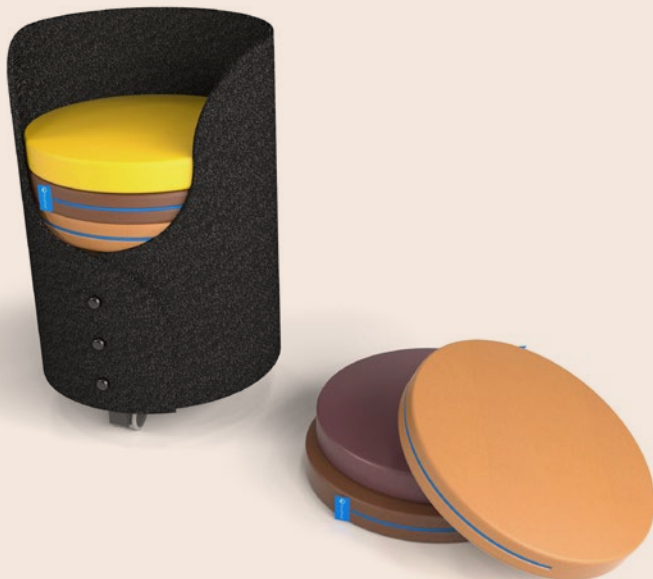
The innovative Uni Flip table supports modern work dynamics as a superb choice for conference, training, meeting, and catering facilities, as well as quickly meeting the demand for extra working space for projects.

*30" Uni-Flip Fixed Height*



## Early Learning Products

Our team of experts can help you curate the perfect early learning products to accent your classroom, aid in organization and encourage creativity and learning.





# Teacher Furniture

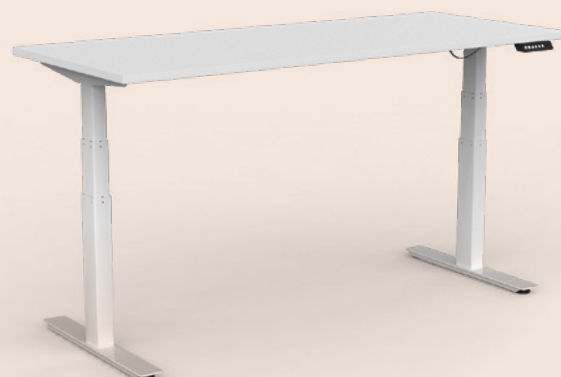


Our range of ergonomic teachers' desks gives educators a comfortable place to both work and encourage collaboration between the student and teacher.



### Crank Height Teacher Desk

Our premium quality 30" x 60" crank-height standing desk helps teachers improve focus, enhance collaboration, increase productivity, and boost calorie burn. The effortless crank-operated height adjustment from 27" to 44.5" means a smooth transition between a variety of ergonomic desk positions.



### Height Adjustable Teacher Desk

The unique shape combined with the movable, height-adjustable podium provides the ultimate flexibility and comfort for today's active educators.

*Height adjustable from 24.5" to 50"*



### D-TOP Teacher Desk

Includes a box pedestal attached to one end and a 36" crescent detachable table on casters on the other end. Detachable table nests perfectly into 24" x 60". D-Top portion can be easily moved.



### Traditional Teacher desk

Includes 30" x 60" Full Modesty Table with a 24" x 42" Reversible Return and a mobile box/box/file pedestal.

Featuring adjustable heights, modular designs and sleek lines, our comfortable, versatile and modern furniture solutions offer something for every classroom setting and teaching style.



---

### Fuzion Kidney Shaped Teacher Desk

The unique shape combined with the movable, height-adjustable podium provides the ultimate flexibility and comfort for today's active educators.

*Podium Dynamic Height Range: 28.25" to 42"*

*Podium Surface: 27" x 30"*

*Kidney Shaped Table: 33" x 60" x 29.5" high*

*Mobile Pedestal: 20.78" x 14.75" x 22.9" high*

Teachers can enjoy our comfortable range of chairs offering educators the ergonomic support they need throughout their busy work day.



### Ignition 2.0

Four-way stretch mesh back, seat fabric, and frame colours are black. Advanced synchro-tilt mechanism puts you in total control of your recline and comfort. Height- and width-adjustable arms provide custom comfort.



### Wit Chair

Ergonomic back support and comfort. Relaxed-fit upholstered pad, mesh, or plastic back. Waterfall seat. Standard 300 lb weight capacity. Heavy-duty series offers 350 lb and 400 lb weight capacity options.



### Focus Chair

Ergonomic back support and comfort. Midback and highback. Relaxed-fit upholstered pad, mesh, or plastic back. Nine ergonomic arm styles with standard or sport arm pads. Waterfall seat. Standard 300 lb weight capacity.



### Novo Task Chair

Ergonomic back support and comfort. Midback and highback. Adjustable lumbar support. Basic, standard synchro, and swivel tilt mechanisms and three arms types. Waterfall seat. Standard 300 lb weight capacity.

# Admin

Our selection of furniture will help you create a structured yet welcoming atmosphere for your school office and meeting rooms. Whether your space is focused on organization, reception, privacy or professional interactions, you'll find a variety of customizable options to suit your needs.



# Furniture

---

"I just always appreciate the help I get from anyone I deal with at CDI. There's always a quick resolution whenever I have to contact someone, and it's never a hassle."



Design an exceptional office space with this versatile collection offering contemporary and classic designs with numerous storage, desk, and leg options.



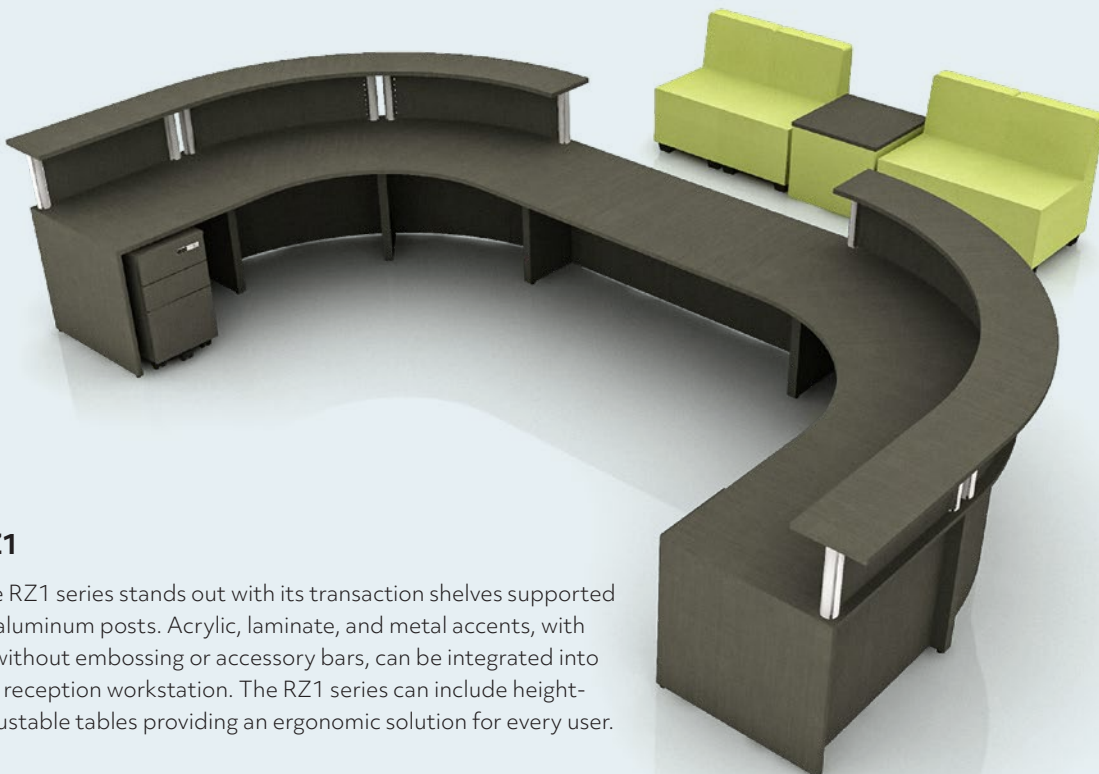


Ensure a welcoming yet professional first impression with our selection of reception furniture while ensuring staff have the space and comfort to maintain productivity while safeguarding important school documents.



## Takeoff Reception

A traditional reception series comprised of full modesty desks, transaction tops, and a variety of storage options including pedestals, lateral files, and hutches. Customize to fit your needs with a free design consultation with your account executive.



## RZ1

The RZ1 series stands out with its transaction shelves supported by aluminum posts. Acrylic, laminate, and metal accents, with or without embossing or accessory bars, can be integrated into the reception workstation. The RZ1 series can include height-adjustable tables providing an ergonomic solution for every user.

## Admin Furniture



### Filing Cabinet

Size options:

Height: 29", 41", or 53"

Depth: 21" or 24"

Width: 30" or 36"



### Arrive

The ARRIVE collection offers a modern aesthetic without sacrificing functionality. Its clean lines alongside generous workspace combined with privacy enhances employee comfort and productivity. ARRIVE's unique layered floating appearance will make a lasting impression in any space.





Foster collaboration and productivity in your meeting rooms with our comfortable seating and table options that can maximize any space.

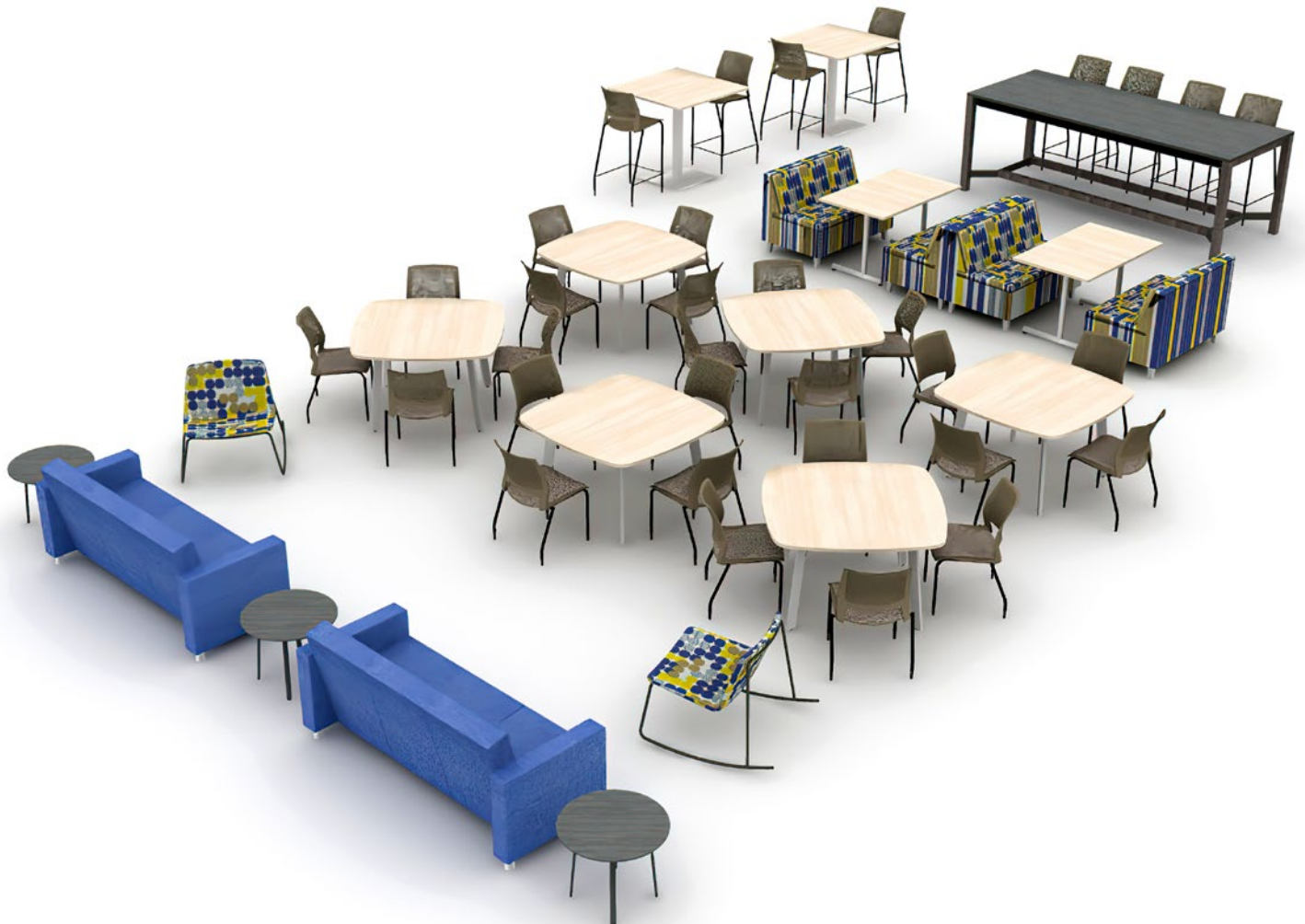




## Staff Room Layouts

Give staff a place to connect, collaborate and take a break with our staff room furniture options. Create the ultimate “cafe ambiance” by incorporating a variety of table heights and seating options.





A touch of style and instant comfort for anyone, anywhere. Our chairs can blend in with the look of nearly any space and offer consistent comfort and proper ergonomic support at an attainable price.



### Focus Side Chair

Focus side chair with mesh back and upholstered fabric seat. Available without arms or with adjustable arms.



### Ignition Multi-Purpose Stacking Chair

Contoured, breathable four-way stretch mesh back increases airflow and enhances support. Fixed arms provide upper body support.



### Wit Side Chair

Comfortable, sleek and light-weight side with an upholstered fabric seat. Available without arms or with adjustable arms.



### Rio Stackable Chair

Exceptional support and comfort. Available fully upholstered, an upholstered seat, or plastic. Four-leg, wire rod, 24" counter or 30" bar stool. Standard 300 lb weight capacity.

Ergonomics is important. Our selection of task chairs gives educators the proper support they need throughout their busy work day.



### Focus 2.0 Task Chair

Ergonomic back support and comfort. Slimmer, refined design. Modernized Y-support. Armless, height-adjustable, height and width-adjustable or fully adjustable arms. Standard 300 lb weight capacity.



### Hon Ignition 2.0 Task Chair

Four-way stretch mesh back. Advanced synchro-tilt mechanism puts you in total control of your recline and comfort. Height- and width-adjustable arms provide a custom fit.



### Amplify Task Chair

Ergonomic back support and comfort. Midback and highback. Aerodynamic design. Adjustable lumbar support, enhanced synchro or swivel tilt, and seat depth adjustment. Waterfall seat. Standard 300 lb weight capacity.



### O6 Task Chair

Contoured lines and generous seat cushion ensure all-day support. Height and depth adjustments and tilt adjustments provide customized comfort.

# Common



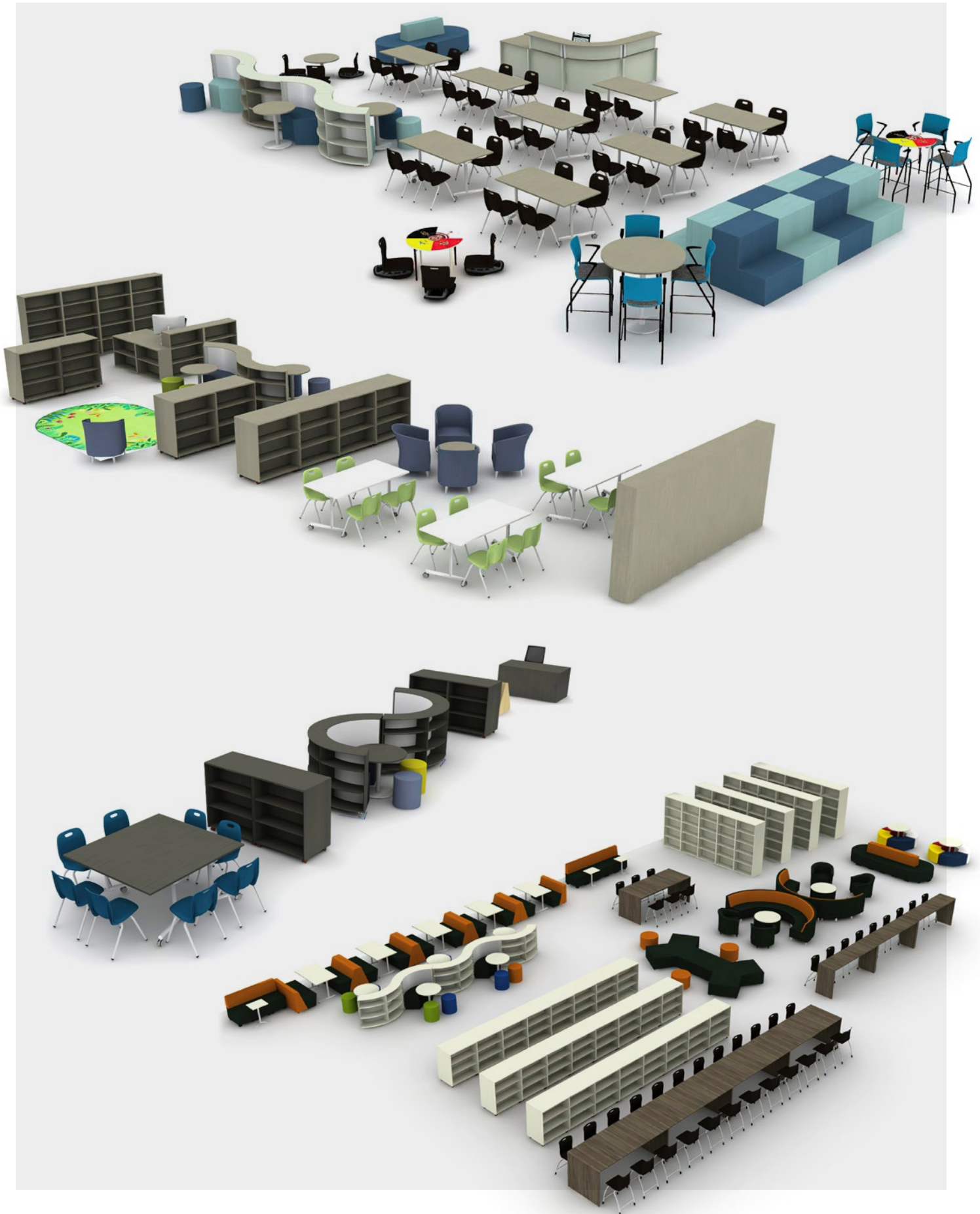
Our selection of multifaceted, modern furniture can help your school create bright, welcoming common spaces for students and educators to interact. Our team of expert consultants are ready to work with you to develop a design that works for you.

# Spaces

The background is a solid orange color. It features several thin, white, overlapping circles of different sizes. In the lower-left and center areas, there are several 3D geometric shapes, including cylinders and rectangular blocks, rendered in a darker shade of orange. These shapes are arranged in a way that suggests depth and perspective.

---

**"The staff at CDI were understanding and patient. The product arrived ahead of schedule and was delivered quite promptly. Impressed with the service, we have already started to plan our next order."**



Common Spaces



Common Spaces

Sturdy yet comfortable, these soft seating options can be used to create the right atmosphere for your needs. Our selection of modular options can be easily reconfigured to help you make the most of every space.

## Ofgo Invite

A cohesive collection that is perfectly suited to a variety of environments, such as lounge and waiting rooms or functional meeting spaces. Invite series is optimal for gathering and creating casual and collaborative environments.

*One Seater Chair Model 3000-SF-1S-NA-GG*  
*Two Seater Chair Model 3000-SF-2S-NA-GG*  
*Three Seater Chair Model 3000-SF-3S-NA-G*



## Ofgo Tribute Soft Seating

Modern elegance defines the Tribute collection. Its clean lines and fine detailing make the Tribute collection a comfortable, stylish solution that is ideal for a multitude of spaces. This series includes one-, two-, and three-seat

lounge models that feature a high-density, high-resiliency foam seat and backrest, and removable seat cushions. Choose contemporary silver post legs or the more traditional wooden legs for a look that best suits your environment.

*One Seater Chair Model 5600-SF-1S-PPSL*  
*Two Seater Chair Model 5600-SF-2S-PPSL*  
*Three Seater Chair Model 5600-SF-3S-PPSL*



## Common Spaces

### Ofgo Liberty Soft Seating

The Liberty is fun and lively. Its collection of ottomans and modular seating lets your imagination play. Liberty's offerings can be used as stand-alone pieces or connected to create modular seating clusters. An extensive range of infinite and completely interchangeable combinations can be selected – ready to adapt to suit the needs of any environment.

*Left Section*

*Model 5977-SF-AL-TTBK*

*Right Section*

*Model 5977-SF-AR-TTBK*

*Centre Section*

*Model 5977-SF-NA-TTBK*

*Hexagon Section*

*Model 5977-SF-HS-TTBK*

*1/4 Radius Extension*

*Model 5900-OQ-1S-TTBK*

*Middle Extension*

*Model 5900-OE-1S-TTBK*

*Square Ottoman*

*Model 5900-OT-SQ-TTBK*

*Hexagon Ottoman*

*Model 5900-OT-HS-TTBK*



### Cyrano

Break out of the ordinary with Cyrano club-style seating to create a lounge area with both a relaxing ambiance and stylish elegance. These modular lounge chairs, love seats, and sofas make a statement in both large open areas and smaller, more intimate rooms.

*Armchair*

*Model CY1-UB-FC-D*

*Armless Chair*

*Model CY1-UB-NA-D*

*Love Seat*

*Model CY2-UB-FC-D*

*Armless Love Seat*

*Model CY2-UB-NA-D*

*Couch*

*Model CY3-UB-FC-D*

*Armless Couch*

*Model CY3-UB-NA-D*

*1 Seat Bench*

*Model CY1-NB-NA-D*

*2 Seat Bench*

*Model CY2-NB-NA-D*

*3 Seat Bench*

*Model CY3-NB-NA-D*

*30° Exterior Curved Armless Chair*

*Model CYC-EB-NA-D*

*30° Interior Curved Armless Chair*

*Model CYC-IB-NA-D*

*30° Interior Curved Bench*

*Model CYC-NB-NA-D*

### Element

Let your imagination and creativity soar with the many shapes and heights of Element lounge furniture by Artopex. Combine seating modules and tables to create, arrange, or rearrange your lounge or break area. Discover the geometry of fun with many configuration and colour possibilities.

*18" Round*

*Model PR2018*

*18" Square*

*Model PS201818*

*18"W x 36"L Rectangle*

*Model PI201836*

*90 Degree Arch*

*Model PC201890*

*18" Round Table Fabric Base*

*Model TMAR201818*

*36" Round Table Fabric Base*

*Model TMAR203636*

*18"W x 36"L Single Link*

*Model PV201836*

*18"W x 36"L Double Link*

*Model PW201836*

*24" Corner Truncated*

*Model PN202424*

*24"W x 48"L Truncated Rectangle*

*Model PM202448*

*18" Element Active Stool*

*Model ENA-PR2018*





## Tub

The Tub chair collection is exactly as the name displays. A tub chair that surrounds the person seated in it, providing a shield from the outside world and allowing creativity to flow unhindered. The short back allows for it to be placed anywhere in a room without obscuring the view, supporting independent work or collaboration.

### JUNIOR SIZE

26"W x 24"D x 26"H Single Seat  
42"W x 24"D x 26"H Two Seater

### SENIOR SIZE

32"W x 28"D x 31"H Single Seat  
53"W x 28"D x 33"H Two Seater



JUNIOR SIZE



SENIOR SIZE



## Cas

A footprint shaped ottoman with soft lines and a whimsical flair, the CAS line adds fun and creativity to any space.

66"W x 24"D x 14"H 14" Seat Model CAS14  
66"W x 24"D x 18"H 18" Seat Model CAS18

## Common Spaces



### Ace

The Ace collection was created with diversity in mind. Whether you have a small or large space catering to children or adults, Ace provides plenty of seating options for either collaboration or independence and enables you to create your unique look and layout.

#### JUNIOR SIZE

16"W x 22"D x 29"H Single Seat w/ Back  
 30"W x 22"D x 29"H Two Seater w/ Back  
 16"W x 22"D x 14"H Spacer Bench  
 20"W x 24"D x 14"H Single Seat Corner Bench  
 28"W x 24"D x 29"H 45° Inside Curve  
 26"W x 24"D x 29"H 45° Outside Curve  
 28"W x 24"D x 14"H 45° Curved Bench

#### SENIOR SIZE

23"W x 28"D x 32"H Single Seat w/ Back  
 46"W x 28"D x 32"H Two Seater w/ Back  
 23"W x 28"D x 18"H Spacer Bench  
 30"W x 30"D x 18"H Single Seat Corner Bench  
 41"W x 30"D x 31.5"H 45° Inside Curve  
 38.5"W x 30"D x 31.5"H 45° Outside Curve  
 41.5"W x 30"D x 18"H 45° Curved Bench



### Kae

The Kae collection offers five shapes with clean, structured pieces. This geometric furniture line can be easily rearranged to support cooperation and collaboration. Seat heights can accommodate a variety of needs thanks to the tiered design.

34.5"W x 36"D x 34"H Corner Model KAEC  
 34.5"W x 36"D x 34"H 2-Tier Model KAE2  
 34.5"W x 36"D x 34"H 3-Tier Model KAE3  
 34.5"W x 36"D x 34"H  
 2-Tier Outside Corner Model KAE2OC

A red folding chair is positioned on the left side of the frame, partially cut off by the edge. The chair has a curved backrest and a flat seat. The background is a solid, vibrant orange color. The word "Specialty" is written in a large, white, sans-serif font in the upper right quadrant.

# Specialty

Today's modern schools offer a multitude of spaces to encourage student learning, creativity and collaboration. Our expert teams can help you build the right room for any learning group, from young scholars to advanced knowledge seekers.

# Rooms



---

"I really appreciate the follow-through from sales to order status and knowing I'll hear again when the order has arrived in your warehouse to arrange delivery."

Create your ultimate science lab with tiered science chemsurf tables and stools at 29"H, 36"H, and 41"H with a demo table and teacher desk. To match the height of your built in millwork, insert 36"H counter height table with stools for a consistent look within your science lab.





Sensory rooms are designed to be a calm place to help those with sensory sensitivities. Support students in learning to regulate their brain's reaction to external stimuli by developing coping strategies and improving focus.

These rooms include lights, colours, sounds, sensory soft play, aromas, tactile surfaces, swings, and/or rockers. The flexibility of the room allows a student to reconfigure the space depending on their needs (movement, compression, smells). It is meant as a peaceful multi-purpose room for a student who is dysregulated.



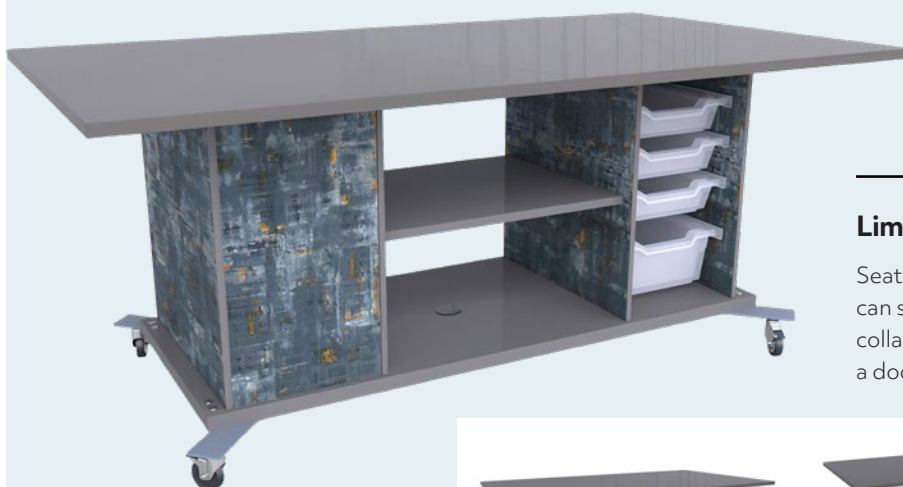


## Build Makerspace

Crafts, construction, tinkering and exploring. Let imaginations run wild while the makerspace tables and stools support all big ideas. Get messy, hammer out the details, and deliver innovation. Durability and reconfigurability is the makerspace table's middle name. This is your space to build. Organize. Inspire. Grow. Do.

## Rover Table

The makerspace movement is becoming a powerful part of many school district curriculums. Schools are repurposing classrooms, renovating computer labs, and retooling media centres to accommodate the tools required for these creative spaces. But for schools that do not have the extra space to give up, Haskell has created the Rover Table. Engineered to be easily transported across the hall or across the district, the Rover table is the ideal solution for a shared maker curriculum.



## Limber

Seating up to six students, this versatile piece can serve any educational purpose, encourages collaboration and is mobile enough to slide through a doorway.



## Specialty rooms



### Idea Island

Inspired by the many makers in school systems, public libraries and museums across the nation that are dedicated to inspiring creativity and discovery in children and adults. The marriage of industrial design with warm wood, strength, and innovation, immediately inspires when you step up to the IDEA Island. It is offered in the simplest form-table only or can be dressed up with technology and seating for up to eight people.

### Ed Table

The Ed Table truly embodies the inventor's spirit—providing the most complete maker experience available. Maximizing creative time while minimizing the amount of logistical preparation work and cleanup was the driving factor behind the design concept. For schools and teachers interested in project-based learning, the Ed Table is a natural extension and fundamental element for engaging learners.



### Robotics Bumper Kit

Can quickly be added to any new or existing IDEA Island, ED Table or select Brainstorm Workbenches to create a safe barrier from your robots making their way to the floor.



### Virco Makerspace Table

Specifically designed for hands-on learning environments, the Makerspace series offers a wide assortment of medium-duty tables, all with a swap out work surface. Surface options include a standard 3/4" laminate plywood core, or an unfinished, non-laminate, raw plywood work surface.

# Music Room

Specialty rooms



## Melody Music Stand

The Melody Music Stand will keep sheet music or lecture notes displayed at the height of your choice. The durable 22-gauge aluminum surface is a spacious 20 1/2" wide and features safe rolled edges to prevent harm to instruments or people. A black textured finish resists chips and scratches so your music stand looks good as new, year after year.



## Melody Stacking Chair

Features a 7/8" frame with 16-gauge square tubing. 14-gauge rear seat brace with band-pitch style with a seat back angle of 97 degrees. Durable polypropylene contoured seat for extra comfort. Can be stacked 18 high on our DY-82 with four stack bumpers to protect finish. Weighs 12 lbs. Non-marring polyethylene glides.



## Stage Set

Constructed with 3/4" solid plywood core. Available with carpet in choice of four colors or 1/8" thick tempered hardboard, 16-gauge, 1-13/16" high formed steel channel frame reinforced with 16-gauge steel angle welded to the inside of the channel. 14-gauge steel tubing capped at the point of floor contact with high impact plastic glides. Legs open and close using only one hand. Stages and risers equipped with drop-in couplings that allow units of same or different heights to be joined together.



## Platforms For Theatre Use

Seated, standing, platform — flipFORMS flip into whatever shape you need, and they go wherever you need them. The pocket-molded hand grips, easy-moving recessed wheels, and lightweight design make it easy to flip them up or roll them away. These fun, innovative products turn any space into an exciting setting in no time.

## Specialty rooms



### Plastic Folding Chair With Metal Frame

Metal frame (seven colours). Plastic seat and back (14 colours). Ten-year frame warranty. Hot stamping available by special quote.

*Model 2250*



### Airflex Series Premium Folding Chair

Available in a variety of frame, finish, and upholstery selections, giving you dozens of combinations with additional vinyl options available. Limited lifetime frame warranty.

*Model 1410*



### Deluxe Fabric Folding Chair

Made with comfort and elegance in mind with stain-resistant Scotchgard fabric covering 1 1/4"-thick foam on our most popular frame.

*Model 2204*



### 50 Series All-Steel Folding Chair

Standard all-steel institutional-grade folding chair features a heavy-duty powder-coated 19-gauge tubular frame with a 2 1/4" frame strengthener on each side of the seat.

*Model 510*



### Premium Lightweight Plastic Folding Chair

The 800 Series folding chair offers the perfect solution for both indoor and outdoor seating events such as meetings, graduations, and receptions.

*Model 802*



### 1200 Series Premium Vinyl Folding Chair

Upholstered folding chair made with the combination of durable vinyl wrapped over 1 1/4" of soft foam on our most popular frame.

*Model 1203*



**Heavy-Duty Seminar  
Folding Table**

BT1860 - 18" x 72"

Size	Model
18"D x 60"L	BT1860
18"D x 72"L	BT1872
18"D x 96"L	BT1896



**Heavy-Duty Folding  
Table**

BT3072 - 30" x 72"

Size	Model
30"D x 60"L	BT3060
30"D x 72"L	BT3072
30"D x 96"L	BT3096



**Heavy-Duty Round  
Folding Table**

BT71R

Size	Model
48" Round	BT48R
60" Round	BT60R
71" Round	BT71R

**CORE-A-GATOR**

CORE-A-GATOR is everything a folding table should be: rugged and strong yet lightweight, thanks to its unique corrugated centre and extruded aluminum frame. The patented leg-locking mechanism and available storage trucks make for quick set-up and tear-down too.



**18" x 72" ABS Plastic Top  
Rectangle Folding Table**



**36" x 72" ABS Plastic Top  
Rectangle Folding Table**



**66" ABS Plastic Top  
Round Folding Table**

Size	Size	Size	Size
18"D x 72"L	30"D x 60"L	36"D x 72"L	60" Round
18"D x 96"L	30"D x 72"L	36"D x 96"L	66" Round
24"D x 72"L	30"D x 96"L		72" Round



# Safety in Schools

CDI Spaces is fully committed to offering the safest and healthiest products available in the education industry.

## Greenguard

Cafeterias, gymnasiums, classrooms, and libraries are only a few areas of the educational environment in which products containing harmful volatile organic compound (VOC) emissions can be found. Some health effects of VOCs include eye, nose, and throat irritation; headaches, loss of coordination, nausea; damage to liver, kidney, and central nervous system; some are suspected or known to cause cancer in humans. Selecting low-emitting GREENGUARD Certified products is an effective way to limit the sources of indoor air pollution.

## Bifma International

Products have passed performance tests for strength, stability, and durability as established by the American National Standards Institute and the Business and Institutional Furniture Manufacturer's Association (ANSI/BIFMA).

## Proudly Made In North America

- Guaranteed best industry product standards of health and safety
- Highest quality
- Supporting local economy

# Reimagine your learning space with CDI Spaces

To learn more about our student-centred classroom model, book your complimentary consultation today!



## Contact Us

1-888-230-2280  
customerservice@cdispaces.ca  
www.cdispaces.ca

## Visit us

### Edmonton Showroom

9319 47 Street NW  
Edmonton, AB T6B 2R7

### Calgary Showroom

Suite 138, 885 42 Avenue SE  
Calgary, AB T2G 1Y8

### Vancouver Showroom

3989 Henning Dr #111  
Burnaby, BC V5C 6P8

## Get a Quote



SCAN ME

"Thank you for going the extra mile for us. Your work benefits our kids. They have dealt with many challenges this year and your efforts make a difference."

**Trout Lake School**

"Great customer service, installation staff is efficient and friendly, great quality products, and warranty work is never an issue."

**Woodhaven School**

"Kind, professional, and knowledgeable staff! We love our new staff room!"

**Star of the Sea School**